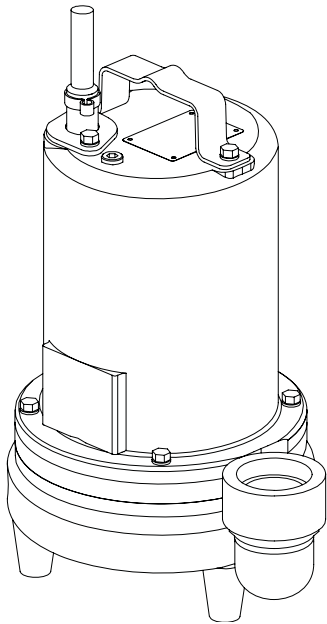


Series EH-HT

3/4" Spherical Solids Handling
High Temperature, Single Seal

Submersible Effluent Pumps



Specifications:

DISCHARGE	2" NPT, Female, Vertical
LIQUID TEMPERATURE	200°F (93°C) Continuous
VOLUTE	Cast Iron ASTM A-48, Class 30
MOTOR HOUSING	Cast Iron ASTM A-48, Class 30
SEAL PLATE	Cast Iron ASTM A-48, Class 30
IMPELLER: Design	3 Vane, open, with pump out vanes on back side. Dynamically balanced, ISO G6.3
Material	Cast Iron ASTM A-48, Class 30
SHAFT	416 Stainless Steel
SQUARE RINGS.....	Buna-N
HARDWARE	300 Series Stainless Steel
PAINT.....	Air Dry Enamel
SEAL: Design	Single Mechanical
Material	Carbon/Ceramic/Buna-N
Hardware	300 Series Stainless
CORD ENTRY	20 ft. (6.1m) Cord with plug on 1 phase. Quick connect, custom molded for sealing and strain relief
UPPER BEARING.....	Single Row, Ball, Oil lubricated
LOWER BEARING.....	Single Row, Ball, Oil lubricated
MOTOR: Design	NEMA L -Single Phase, NEMA B -Three phase Torque Curve, Oil Filled, Squirrel Cage Induction
Insulation.....	Class B
SINGLE PHASE:	
.5HP, 120Volt	Split Phase. Includes overload protection in motor
.5HP, 240Volt	Capacitor Start, Induction Run Includes Overload Protection in Motor
1.5HP	Permanent Split Capacitor (PSC) Includes Overload Protection in Motor
THREE PHASE	200-240/480 is Tri-Voltage. 600V. Requires Overload Protection to be included in control panel
OPTIONAL EQUIPMENT.....	Seal Material, Impeller Trims, Additional cord, Normally Closed Temperature Sensors with cord for 3 phase pumps (Requires relay in control panel).
RECOMMENDED:	
Accessories	Break Away Fitting (BAF) Check Valve Control Panel
Seal Kit PN	130180
Service Kit PN.....	130207

Series: EH-HT
.5 & 1.5HP, 3450RPM,
60Hz

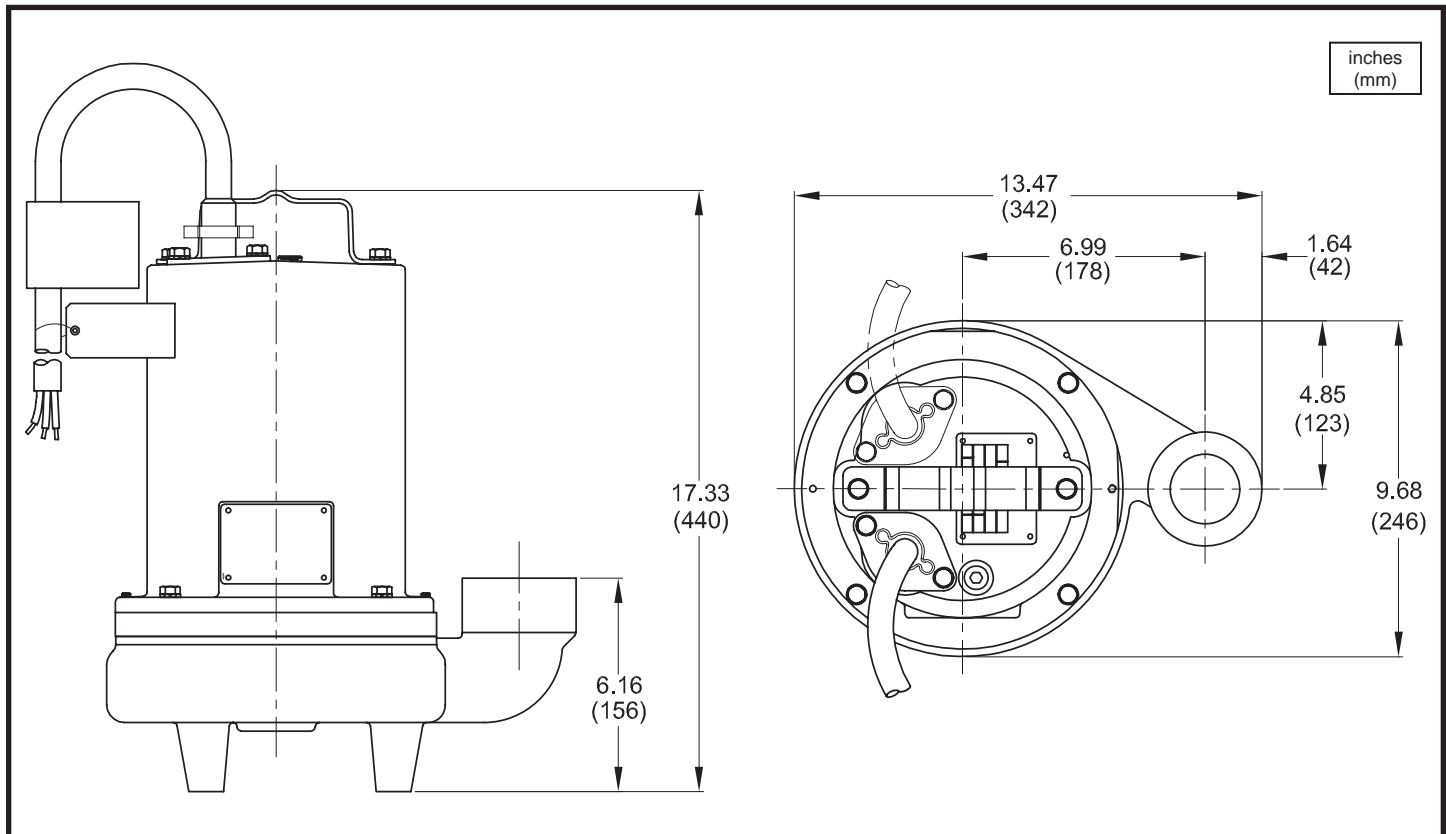


Sample Specifications: Section 3 Page 6.

DESCRIPTION:

PUMP IS DESIGNED FOR HANDLING SEWAGE EFFLUENT IN **HIGH TEMPERATURE** SEPTIC TANK/EFFLUENT APPLICATIONS.

Submersible Effluent Pumps



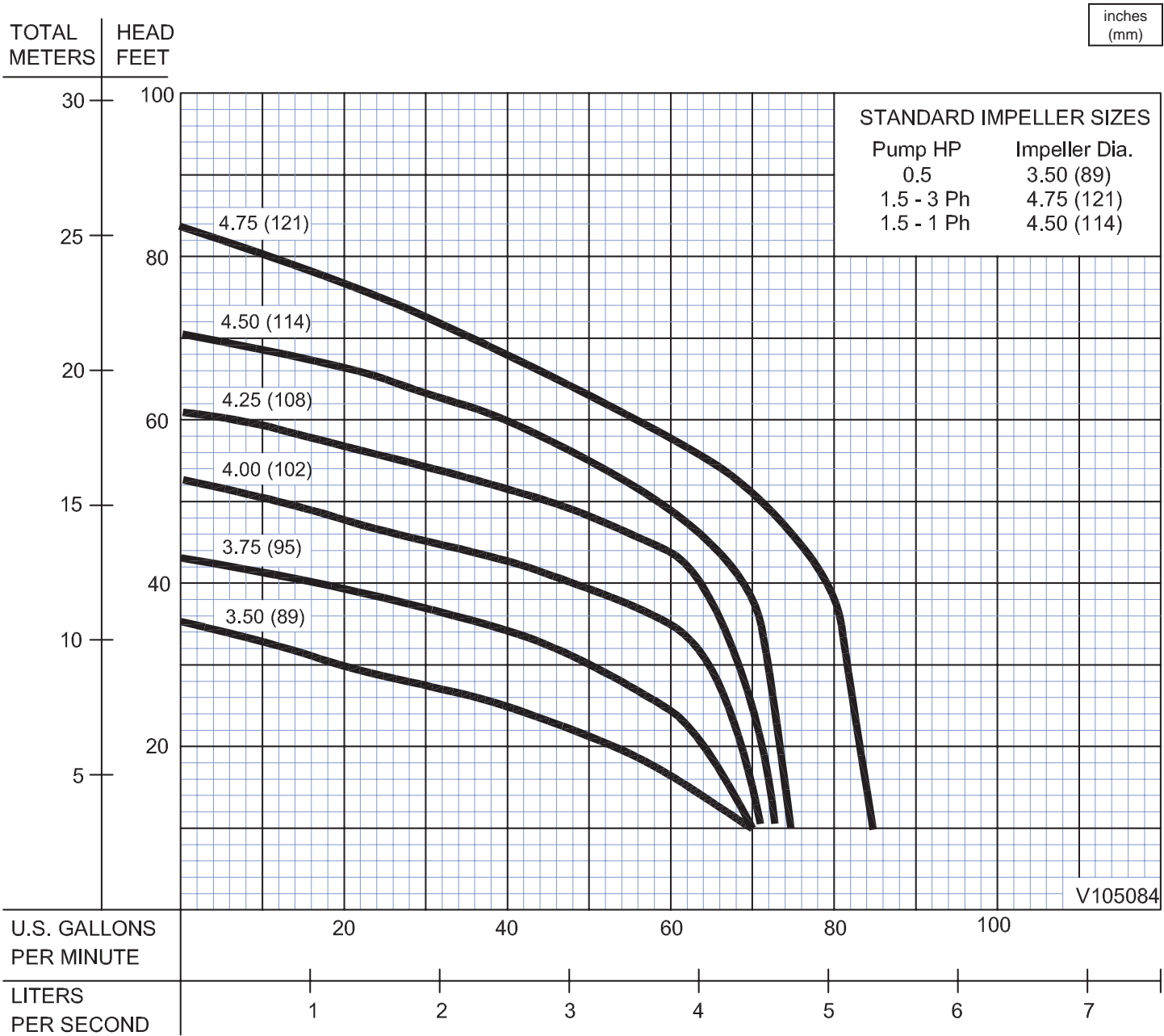
MODEL NO	PART NO	HP	VOLT/PH	Hz	RPM (Nom)	NEMA START CODE	FULL LOAD AMPS	LOCKED ROTOR AMPS	CORD SIZE	CORD TYPE	CORD O.D. inch (mm)
EH512HT	105084	0.5	120/1	60	3450	M	10.6	47.9	14/3	SOW	0.530 (13.5)
EH522HT	105085	0.5	240/1	60	3450	K	5.3	18.5	14/3	SOW	0.530 (13.5)
EH1522HT	105093	1.5	240/1	60	3450	E	9.0	30.6	14/3	SOW	0.530 (13.5)
EH1592HT	105094	1.5	200/240/3	60	3450	H/F	7.8/7.0	29.2/18.7	14/4	SOW	0.570 (14.5)
EH1542HT	105095	1.5	480/3	60	3450	K	3.5	14.6	14/4	SOW	0.570 (14.5)

OPTIONAL - Temperature sensor cord for 3 phase models is 14/3 SOW, .530 (13.5mm) O.D.

IMPORTANT !

- 1.) PUMP MAY BE OPERATED "DRY" FOR EXTENDED PERIODS WITHOUT DAMAGE TO MOTOR AND/OR SEALS.
- 2.) THIS PUMP IS NOT APPROPRIATE FOR THOSE APPLICATIONS SPECIFIED AS CLASS I DIVISION I HAZARDOUS LOCATIONS.
- 3.) INSTALLATIONS SUCH AS DECORATIVE FOUNTAINS OR WATER FEATURES PROVIDED FOR VISUAL ENJOYMENT MUST BE INSTALLED IN ACCORDANCE WITH THE NATIONAL ELECTRIC CODE ANSI/NFPA 70 AND/OR THE AUTHORITY HAVING JURISDICTION. THIS PUMP IS NOT INTENDED FOR USE IN SWIMMING POOLS, RECREATIONAL WATER PARKS, OR INSTALLATIONS IN WHICH HUMAN CONTACT WITH PUMPED MEDIA IS A COMMON OCCURRENCE.
- 4.) MUST USE A **HIGH TEMPERATURE** WIDE ANGLE LEVEL CONTROL IN HIGH TEMPERATURE APPLICATIONS.

Submersible Effluent Pumps



STANDARD IMPELLER SIZES

Pump HP	Impeller Dia.
0.5	3.50 (89)
1.5 - 3 Ph	4.75 (121)
1.5 - 1 Ph	4.50 (114)

V105084

Testing is performed with water, specific gravity 1.0 @ 68° F @ (20°C), other fluids may vary performance