

**FEATURES**

Built-in magnetic contactors allow the use of standard pressure switches, prolong switch life and eliminate the need to source and install separate contactors. This will save installation time and reduce total system component costs.

Voltage Relay for installer convenience

230 volt standard models

Start capacitors for starting torque

Run capacitors for efficiency and quiet operation

Type N3R enclosure for indoor or outdoor mounting

Multiple knockouts and two ground terminals

Manual reset overload circuit breakers

**AGENCY LISTINGS**



TESTED TO UL AND CSA STANDARDS BY UL.

# Magnetic Contactor 1Ø Control Boxes

FOR 6", 5 - 15 HP CENTRIPRO SUBMERSIBLE MOTORS



**CentriPro**  
a xylem brand

### CONTROL BOXES FOR 6" CENTRIPRO (HITACHI) SINGLE-PHASE MOTORS\*

Control Box Order Number	Use On Motor No.	HP	Volts	Capacitor Ratings (Mfd)		Contactor Rating	Overload Circuit Breaker	Enclosure Dimensions	Shipping Weight (lbs.)
				Start Caps	Run Caps				
CB05MC3R	6M051	5	230	189-227 / 330V	30 / 440V	30A	30A	12.5" H x	15
CB07MC3R	6M071	7.5		243 - 292 / 330V	40 / 440V	50A	50A	11" W x 6.7" D	
CB10MC3R	6M101	10		161 - 193 / 330V (Qty 2)	(2) 25 / 440V	75A	60A	17.5" H x	27
CB15MC3R	6M151	15		216 - 260 / 330V (Qty 2)	(2) 35 / 440V	90A	90A	11" W x 6.7" D	
CB15MC3R100 ①							100A		

① Overload circuit breaker is rated at 100 amps versus 90 amp standard in CB15MC. Use in areas with high ambient temperatures to reduce nuisance tripping.

### CONTROL BOXES FOR 6" FM SERIES SINGLE-PHASE MOTORS

Control Box Order Number	Use On Motor No.	HP	Volts	Capacitor Ratings (Mfd)		Contactor Rating	Overload Circuit Breaker	Enclosure Dimensions	Shipping Weight (lbs.)
				Start Caps	Run Caps				
<b>CB05MC3RF</b>	6F051	5	230	216-260	(2) 30	30A	30A	12.5"H x 11"W x 6.7"D	15
<b>CB07MC3RF</b>	6F071	7.5		(2) 189-227	(1) 60	50A	50A		
<b>CB10MC3RF</b>	6F101	10		216-260	(2) 50	70A	60A	17.5"H x 11"W x 6.7"D	27
<b>CB15MC3RF</b>	6F151	15			(2) 70	90A	80A		

**Note:** FM Series control boxes are designed for use with FM Series 6" motors only. Use with motor part numbers "6F...".

Motor overload circuit breaker size based on FLA of motor. FM Series motor can only use 80 A O.L. breaker.

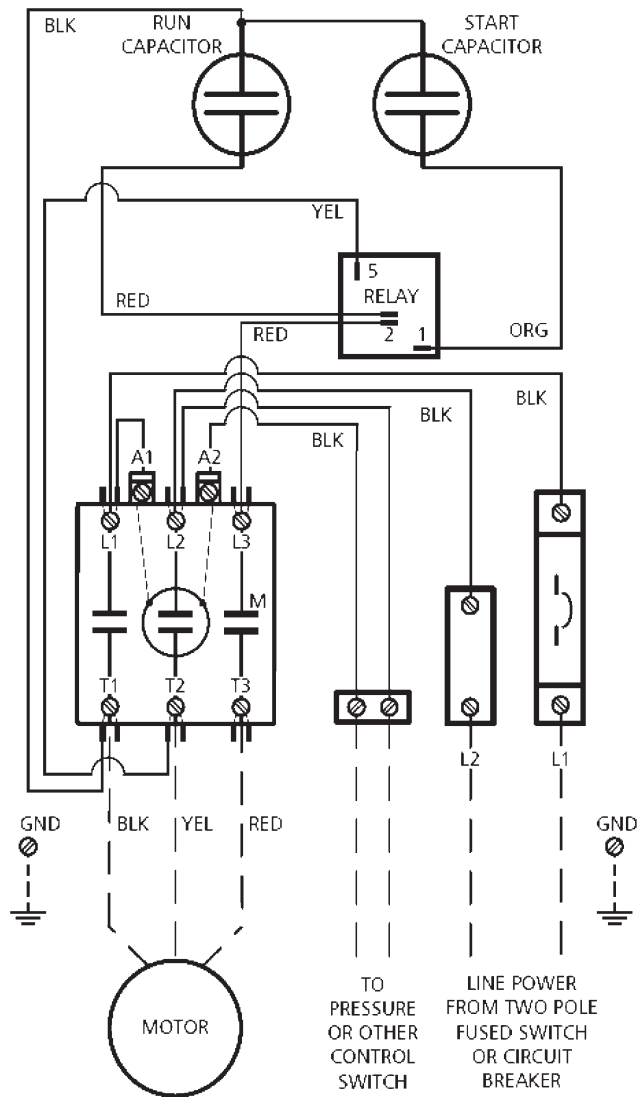
Do not use these control boxes on Franklin Electric 6" motors as the overloads and capacitors are not the same as used by Franklin Electric. Using these will void Franklin Electric's warranty.

**6" MOTOR CONTROL BOX PART LIST**

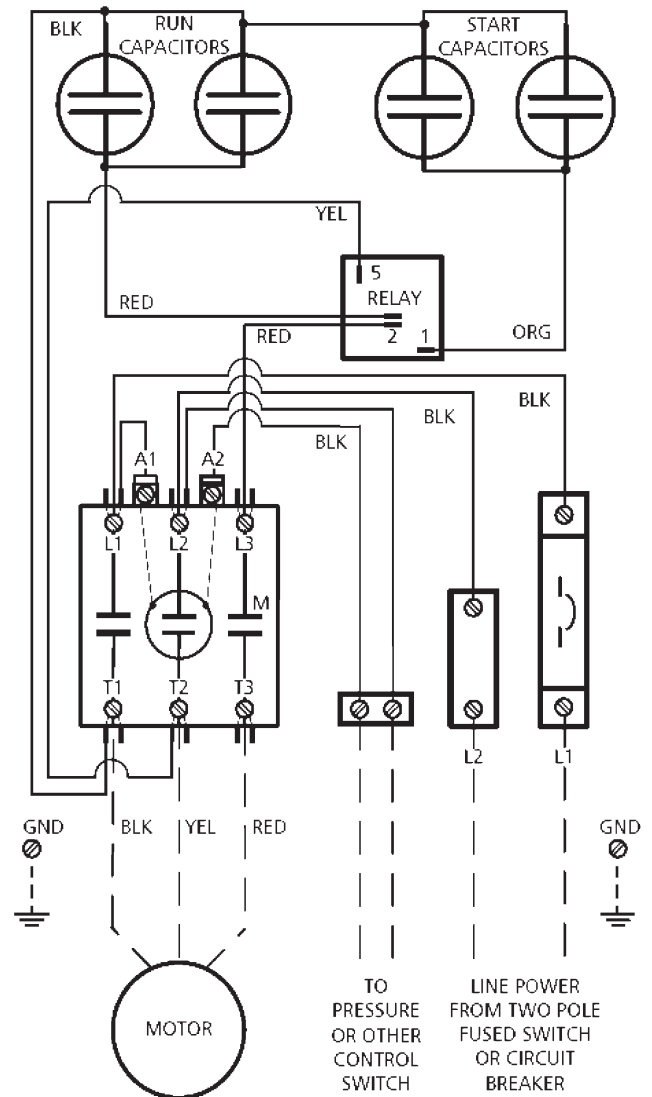
<b>Order No.</b>	<b>Part Description</b>	<b>Where Used</b>
9K580	Relay	ALL
9K581	Run Capacitor 35uF at 450V	CB15MC3R & CB15MC3R100
9K582	Start Capacitor 216-260uF at 330V	CB05MC3RF, CB10MC3RF, CB15MC3R, CB15MC3RF & CB15MC3R100
9K608	Start Capacitor 161-193uf at 330VAC	CB10MC3R
9K609	Start Capacitor 243-292uf at 330VAC	CB07MC3R
9K610	Start Capacitor 189-227uf at 330VAC	CB05MC3R
9K611	Run Capacitor 25uf at 450VAC	CB10MC3R
9K612	Run Capacitor 40uf at 450VAC	CB07MC3R
9K613	Run Capacitor 30uf at 450VAC	CB05MC3R
9K614	DP Mag Contactor 90 FLA, 3 pole	CB10MC3R, CB10MC3RF, CB15MC3R, CB15MC3R100 & CB15MC3RF
9K616	DP Mag Contactor 50 FLA, 3 pole	CB05MC3R, CB05MC3RF, CB07MC3R & CB07MC3RF
9K618	Circuit Breaker 100A	CB15MC3R100
9K619	Circuit Breaker 90A	CB15MC3R
9K620	Circuit Breaker 60A	CB10MC3R & CB10MC3RF
9K621	Circuit Breaker 50A / 45A	CB07MC3R & CB07MC3RF
9K622	Circuit Breaker 30A	CB05MC3R & CB05MC3RF
9K826	Circuit Breaker 80A	CB15MC3RF
9K827	DP Mag Contactor 40 FLA, 2 pole	CB10MC3RF & CB15MC3RF
9K828	Run Capacitor 70uf at 440VAC	CB15MC3RF
9K829	Run Capacitor 60uf at 440VAC	CB07MC3RF
9K830	Run Capacitor 50uf at 440VAC	CB10MC3RF
9K831	Start Capacitor, 189-227uf, 330uf	CB07MC3RF
9K832	Run Capacitor 30uf at 440VAC	CB05MC3RF

### CENTRIPRO MOTOR DIAGRAMS

#### 5 AND 7.5 HP WIRING DIAGRAM

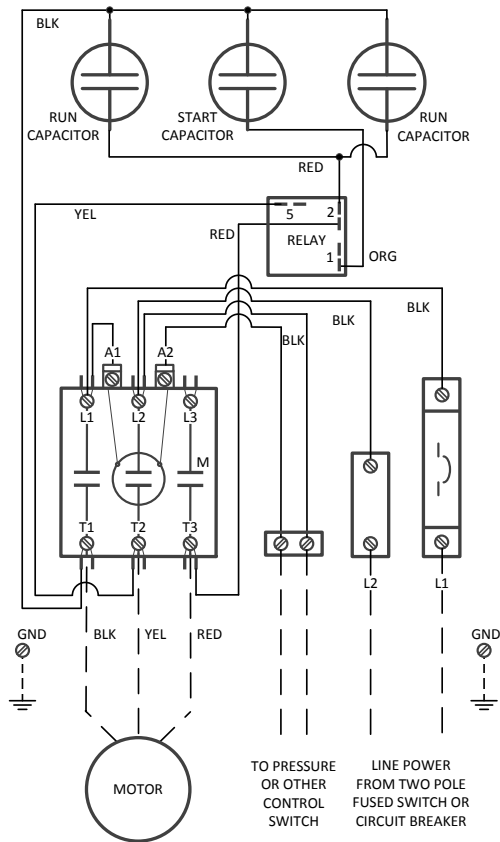


#### 10 AND 15 HP WIRING DIAGRAM

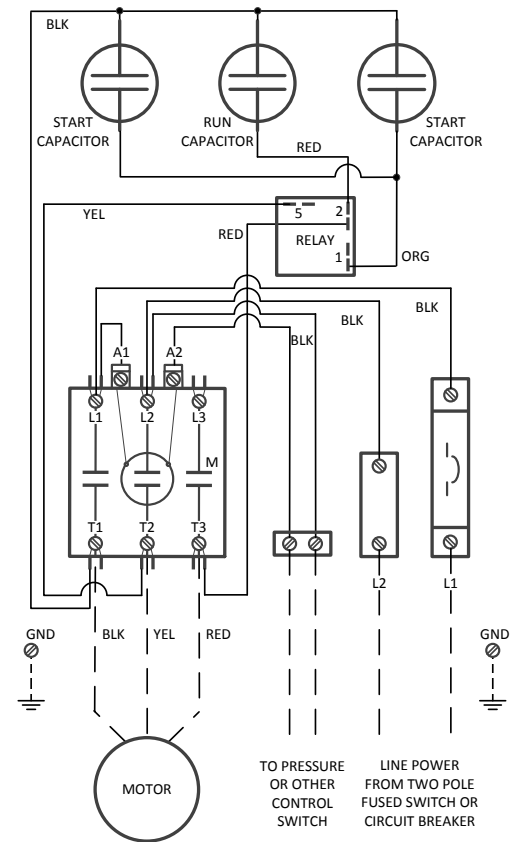


### FM SERIES MOTOR DIAGRAMS

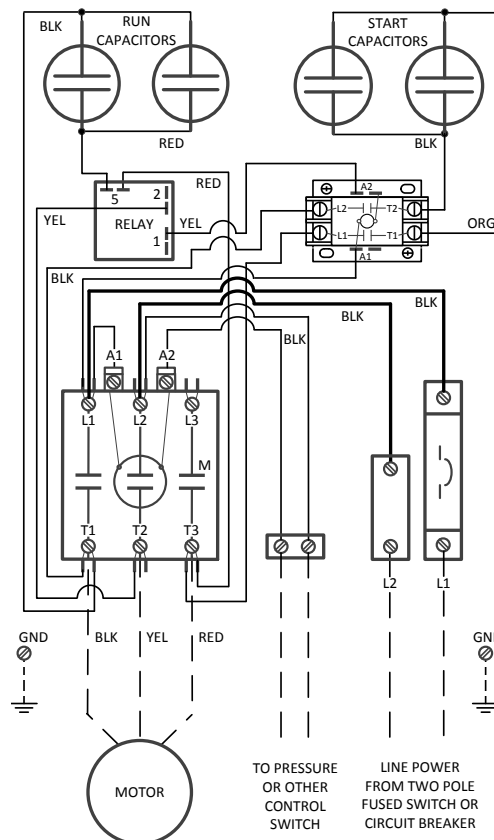
#### 5 HP WIRING DIAGRAM



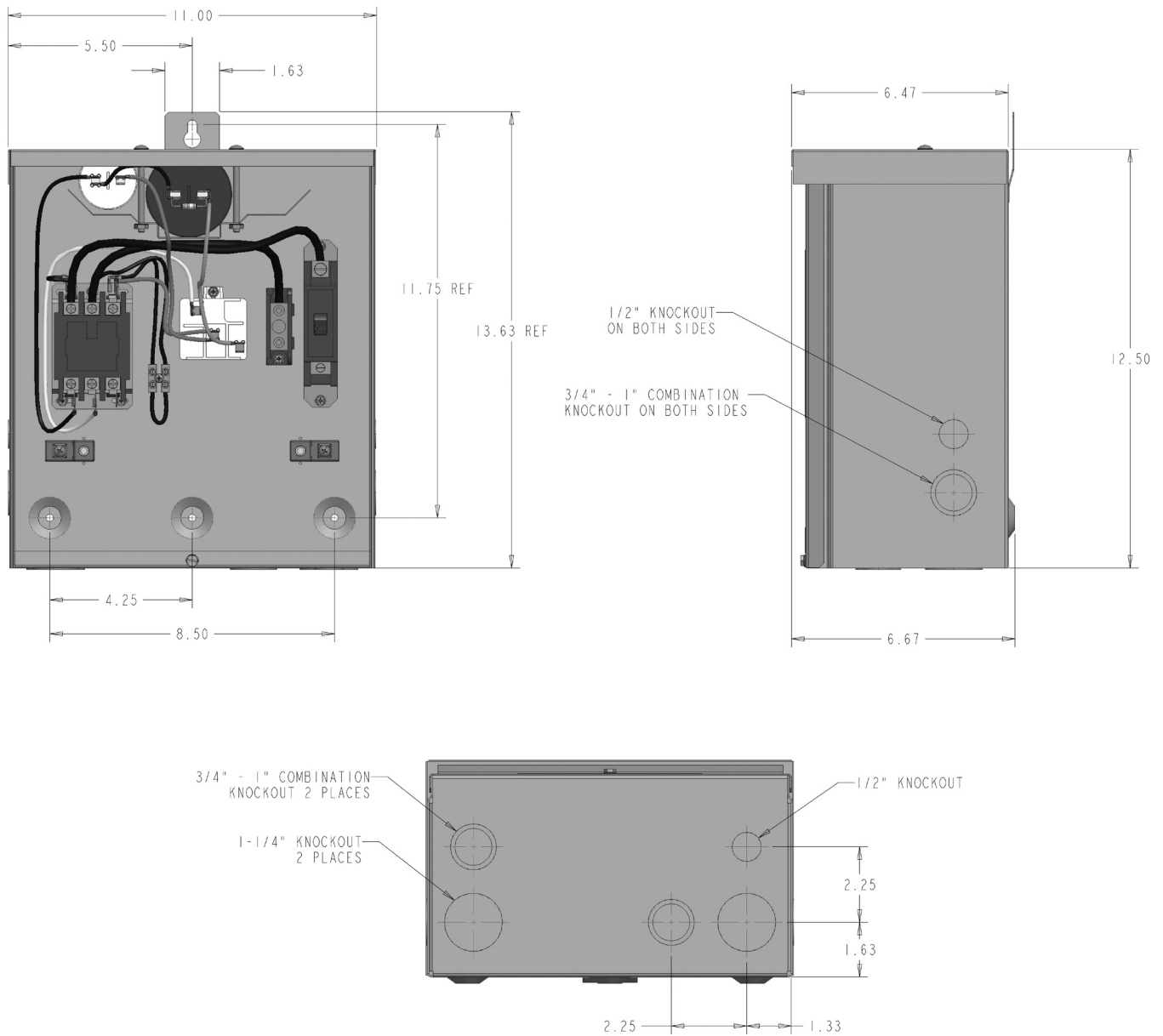
#### 7.5 HP WIRING DIAGRAM



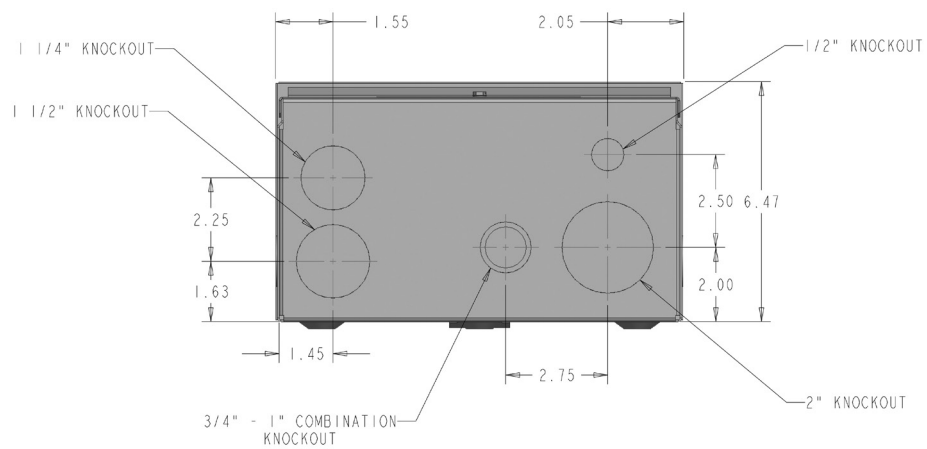
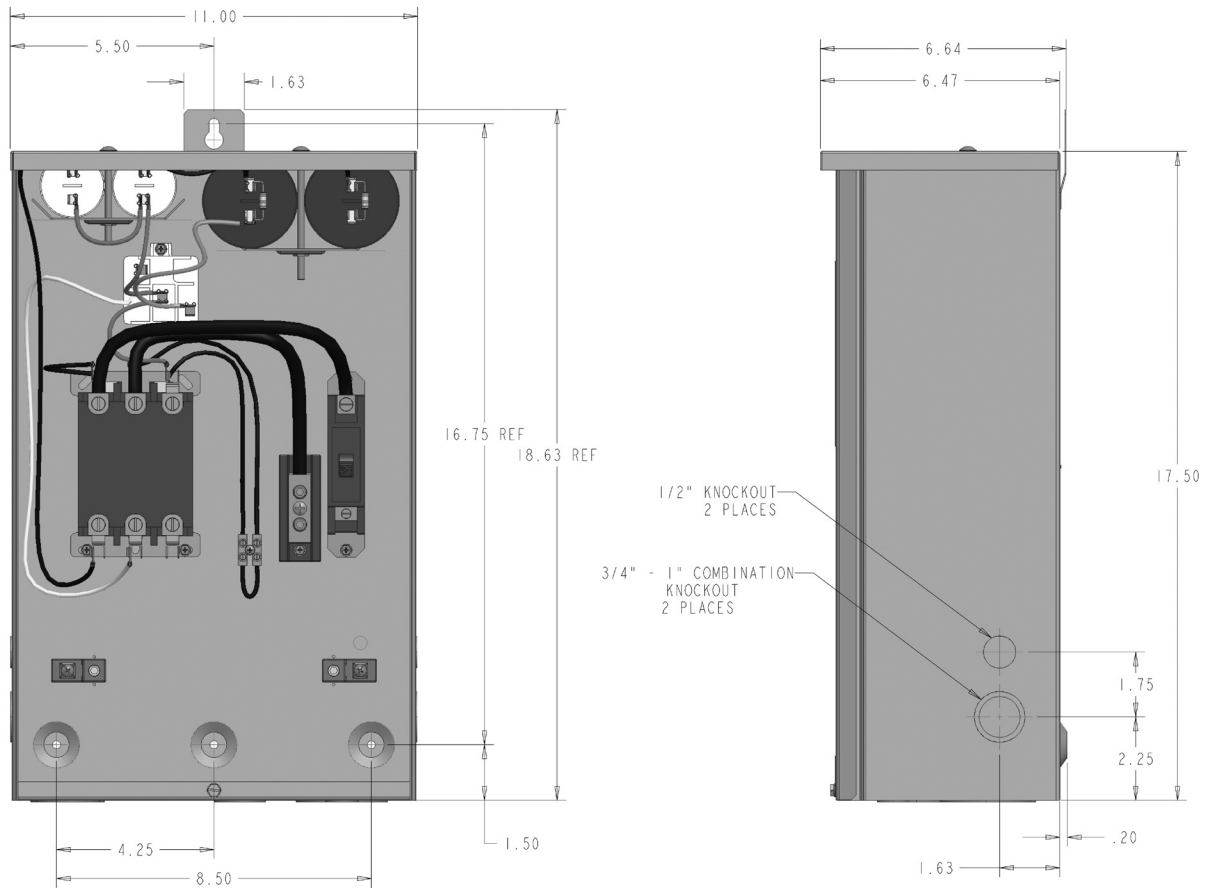
#### 10 AND 15 HP WIRING DIAGRAM



### 5 AND 7.5 HP DIMENSIONS



### 10 AND 15 HP DIMENSIONS



# Xylem |'zīləm|

- 1) The tissue in plants that brings water upward from the roots;
- 2) a leading global water technology company.

We're a global team unified in a common purpose: creating advanced technology solutions to the world's water challenges. Developing new technologies that will improve the way water is used, conserved, and re-used in the future is central to our work. Our products and services move, treat, analyze, monitor and return water to the environment, in public utility, industrial, residential and commercial building services settings. Xylem also provides a leading portfolio of smart metering, network technologies and advanced analytics solutions for water, electric and gas utilities. In more than 150 countries, we have strong, long-standing relationships with customers who know us for our powerful combination of leading product brands and applications expertise with a strong focus on developing comprehensive, sustainable solutions.

**For more information on how Xylem can help you, go to [www.xyleminc.com](http://www.xyleminc.com)**



Xylem Inc.  
2881 East Bayard Street Ext., Suite A  
Seneca Falls, NY 13148  
Phone: (866) 325-4210  
Fax: (888) 322-5877  
[www.xylem.com/centripro](http://www.xylem.com/centripro)

CentriPro is a trademark of Xylem Inc. or one of its subsidiaries.  
© 2018 Xylem Inc. BC6CBOX R6 November 2018