

mody

MLS SERIES - HI CHROME SLURRY & SAND SUBMERSIBLE PUMP

MLS SERIES

ELECTRIC SUBMERSIBLE SLURRY & SAND PUMP - 28% HI-CHROME DESIGNED FOR PORTABLE AND ABRASIVE APPLICATIONS

Model	Discharge (inches)	HP	RPM	Max Amps 460v-60Hz	Solids (inches)	Weight (lbs.)
MLS3-5	3	5	1800	8.4	1.2	262
MLS4-8	4	8	1800	11.4	1.2	332
MLS6-12	6	12	1800	16.1	1.2	403
MLS8-20	8	20	1800	24.9	1.2	612
MLS8-30	8	30	1800	34.7	1.2	955



MATERIALS OF CONSTRUCTION AND ENGINEERING DATA

PUMP END

pH Range	5 - 12
Impeller Type	Semi-Open
Max. Temperature of Pumped Fluid:	104°F/40°C
Max. Starts/Stop Per Hour:	15
Max. Submergence:	65 Feet

MOTOR

4-pole induction **continuous rated** motor with squirrel cage rotor.
Automatic ON/OFF/ON Thermal Overloads in Motor.(5-12HP)
Stator insulation class 'F' (155°C), 1.15 Service Factor.

POWER SUPPLY

3 phase, 60 Hz, AC Supply, 208, 230,460,575. Other voltages available upon request.

BALL BEARINGS

The rotor shaft is carried in two ball bearings. Double row contact lower bearing is capable of carrying high thrust and radial loads. Upper bearing is a deep groove single row oversized bearing. The bearings are enclosed with high temperature grease-containing special Anti-corrosion additive.

POWER CABLE

Waterproof/oil proof, rubber-insulated, neoprene-sheathed copper conductor flexible cable, 50 ft. (15m) length standard. Type SOOW in North America, EPR in the Middle East and HO7RN in the EU.

SHAFT SEALS

Double Mechanical Seals, outer and inner are Silicon Carbide, both rotating and stationary faces.

HYDRAULICS

Multi Vane, Semi-Open Impellers to effectively handle abrasive media.

COOLING

Top discharge ensures that the pump is cooled by the pumped liquid allowing the pump to operate even if not completely submerged.

MATERIALS OF CONSTRUCTION

Pump Casing:	ASTMA-48
Stator Casing:	ASTMA-48
Impeller:	28% Hi-Chrome Iron
Wear Plate:	28% Hi-Chrome Iron
Agitator	28% Hi-Chrome Iron
Shaft:	403 Stainless Steel
Hardware:	304 Stainless Steel
"O" Rings:	Nitrile Rubber
Mech. Seals:	SC/SC (Upper & Lower)

SURFACE TREATMENT

Primer with Epoxy paint



Mody Pumps® Inc.

2166 Zeus Court, Bakersfield, CA 93308. USA
Tel.: (661) 392-7600 • Fax: (661) 392-7601
<http://www.modypump.com>
E-mail: sales@modypump.com

mody

**MLS SERIES - HI CHROME
SLURRY & SAND SUBMERSIBLE PUMP**

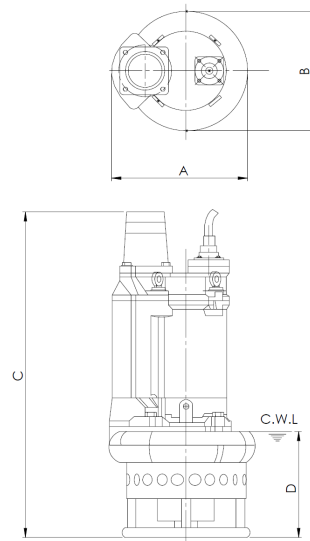
MLS Series

Portable Wet Pit Installation

DIMENSIONS CHART (inches)

MODEL	A	B	C	D *
MLS3-5	13.8	12.8	32.2	9.9
MLS4-8	16.4	14.7	33.3	9.9
MLS6-12	17.1	16.0	35.0	9.9
MLS8-20	19.1	18.0	44.2	9.9
MLS8-30	22.8	20.8	49.0	9.9

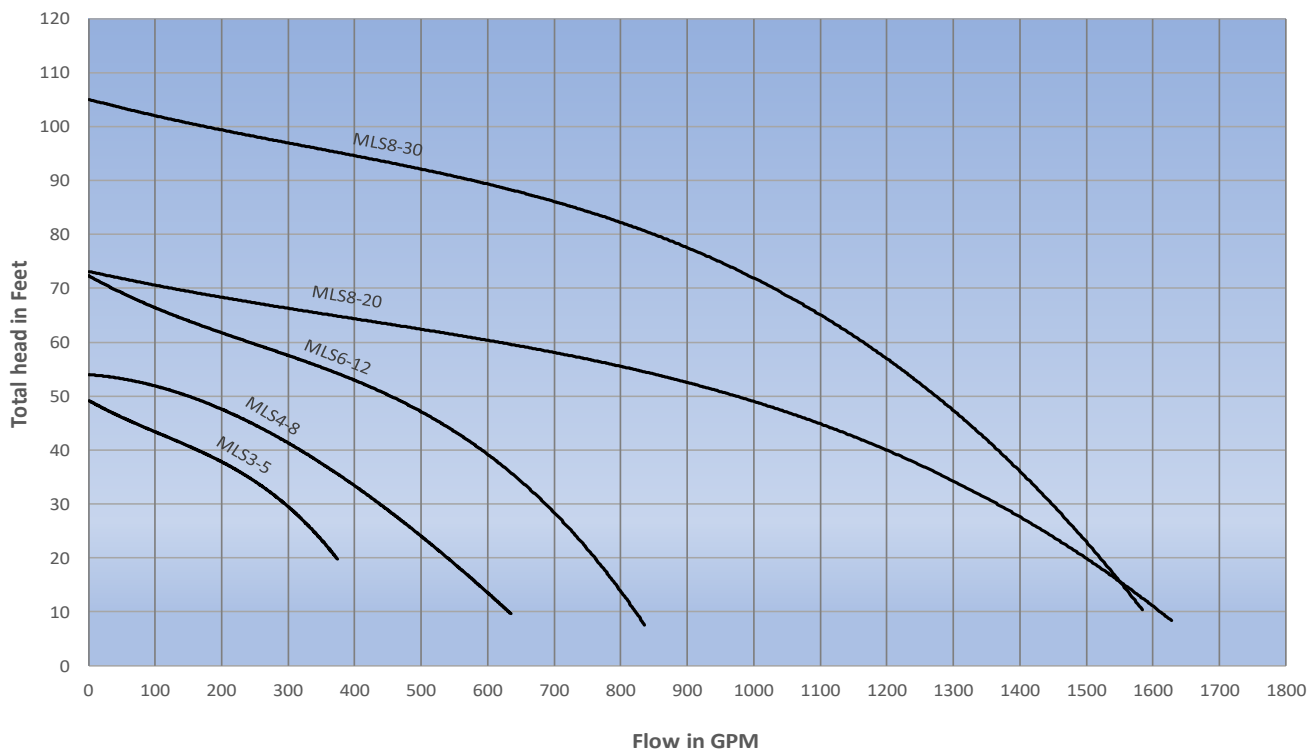
* Lowest Water Level for effective suction



PERFORMANCE CURVES

Performance Curve based on Clean Water at 68° F with 1.0 SG.

MODY MLS SERIES



Due to continuous product development, specifications are subject to change without notice. Vol. 1, Rev. 1, Nov. 2018