

## TECHNICAL BROCHURE

BGWP23X30

### FEATURES

#### Choice of Pumps:

- PV Vortex
- PS Non-clog
- WW05 Vortex

Ribbed 23x30 Polyethylene Basin

Fully assembled at the factory for simplified installation.

#### Swing type 2" check valve:

- A9-2PH rubber sleeve type
- A9-2P compression type

Schedule 40, 2" PVC discharge pipe with 1/8" bleed hole is factory installed.

Structural foam cover is strong and corrosion resistant.

Vent grommets for both 2" and 3" vent provided. Adds system flexibility and reduces inventory.

Torque stop insert to stabilize the pump.

Ribbed Basin Inlet Hub is a molded-in, slip-fit type for connection using flexible, slip-fit connectors and clamps (not included).

### SPECIFICATIONS

#### 23 x 30 \_ Basin:

Ribbed polyethylene basin • Usable capacity: 24.8 gallons

Dimensions: 23" w x 30" h • Inlet: 4" inlet hub



**A9-2PH**



**A9-2P**

# GWP23x30

ASSEMBLED WASTEWATER PACKAGES

### PACKAGE WITH PV VORTEX PUMP

| PACKAGE<br>ORDER<br>NUMBER | PUMP    | VOLTS | ①                                                                                                            |                                                                                                                                 |                                       |                                                                      |
|----------------------------|---------|-------|--------------------------------------------------------------------------------------------------------------|---------------------------------------------------------------------------------------------------------------------------------|---------------------------------------|----------------------------------------------------------------------|
|                            |         |       | BASIN                                                                                                        | COVER                                                                                                                           | CHECK<br>VALVE                        | DISCHARGE<br>PIPE                                                    |
| GWP1141                    | PV51P1F | 115   | Ribbed Polyethylene<br>23" Diameter x 30" High with<br>4" Slip Type Inlet Hub and<br>Pump Torque Stop Insert | 18" Structural<br>Foam Cover<br>with Bolts,<br>Sealing Tape<br>and (2) 2"<br>and<br>(1) 3" Vent<br>and<br>Discharge<br>Grommets | A9-2PH<br>2" Rubber<br>Sleeve<br>Type | 2" Diameter<br>x 30" Long<br>Schedule 40<br>PVC<br>Discharge<br>Pipe |
| GWP1142                    | PV52P1F | 230   |                                                                                                              |                                                                                                                                 |                                       |                                                                      |
| GWP1143                    | PV51AV  | 115   |                                                                                                              |                                                                                                                                 |                                       |                                                                      |
| GWP1144                    | PV51A1  | 115   |                                                                                                              |                                                                                                                                 |                                       |                                                                      |
| GWP1145                    | PV51P1  | 115   |                                                                                                              |                                                                                                                                 |                                       |                                                                      |
| GWP1241                    | PV51P1F | 115   |                                                                                                              |                                                                                                                                 |                                       |                                                                      |
| GWP1242                    | PV52P1F | 230   |                                                                                                              |                                                                                                                                 |                                       |                                                                      |
| GWP1243                    | PV51AV  | 115   |                                                                                                              |                                                                                                                                 |                                       |                                                                      |
| GWP1244                    | PV51A1  | 115   |                                                                                                              |                                                                                                                                 |                                       |                                                                      |
| GWP1245                    | PV51P1  | 115   |                                                                                                              |                                                                                                                                 |                                       |                                                                      |
|                            |         |       |                                                                                                              |                                                                                                                                 | A9-2P<br>2"<br>Compression<br>Type    |                                                                      |

### PUMP INFORMATION ②

| PUMP MODEL | HP  | VOLTS | MAX. AMPS | MIN. CIRCUIT BREAKER | PHASE | FLOAT SWITCH STYLE   | POWER CORD LENGTH | DISCHARGE CONNECTION | MAXIMUM SOLID SIZE |
|------------|-----|-------|-----------|----------------------|-------|----------------------|-------------------|----------------------|--------------------|
| PV51AV     | 0.5 | 115   | 13        | 20                   | 1     | T-spliced vertical   | 10'               | 2"                   | 2"                 |
| PV51A1     |     |       |           |                      |       | T-spliced wide angle |                   |                      |                    |
| PV51P1     |     |       |           |                      |       | Piggyback wide angle |                   |                      |                    |
| PV51P1F    |     |       |           |                      |       | Piggyback wide angle |                   |                      |                    |
| PV52P1F    |     | 230   | 6.5       | 15                   |       | Piggyback wide angle | 20'               |                      |                    |

① Information on individual basin components for "replacement parts" may be found in the Basin Section, kit numbers CWK11, CWK12, CWK21, CWK22 and CWK23.

② Additional pump information may be found on the pump bulletin.

### PV51, PV52 PERFORMANCE CHART - See "Performance Chart Note"

| Pipe Length (Feet) | GPM                  |    |    |    |    |    |    |    |    |    |
|--------------------|----------------------|----|----|----|----|----|----|----|----|----|
|                    | Vertical Head (Feet) |    |    |    |    |    |    |    |    |    |
|                    | 2                    | 4  | 6  | 8  | 10 | 12 | 14 | 16 | 18 | 20 |
| 25                 | 95                   | 89 | 83 | 77 | 70 | 62 | 53 | 45 | 35 | 22 |
| 50                 | 83                   | 78 | 73 | 67 | 61 | 55 | 48 | 40 | 31 | 20 |
| 75                 | 76                   | 71 | 66 | 61 | 55 | 50 | 43 | 37 | 28 | 18 |
| 100                | 69                   | 65 | 61 | 56 | 51 | 46 | 40 | 33 | 26 | 17 |
| 150                | 60                   | 57 | 53 | 49 | 45 | 40 | 35 | 29 | 23 | 16 |
| 200                | 54                   | 51 | 48 | 44 | 40 | 36 | 32 | 27 | 21 | 14 |
| 250                | 49                   | 47 | 44 | 40 | 37 | 33 | 29 | 24 | 19 | 13 |
| 300                | 46                   | 43 | 40 | 37 | 34 | 31 | 27 | 23 | 18 | 12 |

**NOTE:** Shaded area does not meet 21 GPM. Minimum Scouring Velocity for 2" pipe.

### PERFORMANCE CHART NOTE

These charts show actual system performance with friction loss factored in for various discharge pipe lengths. Calculations and performance based on a system with 2" PVC, schedule 40 plastic pipe (C150), (4) 90° elbows, (1) check valve and (1) shut-off valve. Wastewater requires a minimum scouring velocity of 21 gpm for 2" pipe. Shaded areas do not provide minimum scouring velocity - use only for gray water with no solids.

### PACKAGE WITH PS PUMP

| PACKAGE<br>ORDER<br>NUMBER | PUMP    | VOLTS | ①                                                                                                            |                                                                                                                              |                                       |                                                                      |
|----------------------------|---------|-------|--------------------------------------------------------------------------------------------------------------|------------------------------------------------------------------------------------------------------------------------------|---------------------------------------|----------------------------------------------------------------------|
|                            |         |       | BASIN                                                                                                        | COVER                                                                                                                        | CHECK<br>VALVE                        | DISCHARGE<br>PIPE                                                    |
| GWP1111                    | PS51P1F | 115   | Ribbed Polyethylene<br>23" Diameter x 30" High with<br>4" Slip Type Inlet Hub and<br>Pump Torque Stop Insert | 18" Structural<br>Foam Cover<br>with Bolts,<br>Sealing Tape<br>and (2) 2" and<br>(1) 3" Vent<br>and<br>Discharge<br>Grommets | A9-2PH<br>2" Rubber<br>Sleeve<br>Type | 2" Diameter<br>x 30" Long<br>Schedule 40<br>PVC<br>Discharge<br>Pipe |
| GWP1112                    | PS52P1F | 230   |                                                                                                              |                                                                                                                              |                                       |                                                                      |
| GWP1113                    | PS51AV  | 115   |                                                                                                              |                                                                                                                              |                                       |                                                                      |
| GWP1114                    | PS51A1  | 115   |                                                                                                              |                                                                                                                              |                                       |                                                                      |
| GWP1121                    | PS41P1F | 115   |                                                                                                              |                                                                                                                              |                                       |                                                                      |
| GWP1122                    | PS42P1F | 230   |                                                                                                              |                                                                                                                              |                                       |                                                                      |
| GWP1123                    | PS41AV  | 115   |                                                                                                              |                                                                                                                              |                                       |                                                                      |
| GWP1124                    | PS41A1  | 115   |                                                                                                              |                                                                                                                              |                                       |                                                                      |
| GWP1211                    | PS51P1F | 115   |                                                                                                              |                                                                                                                              |                                       |                                                                      |
| GWP1212                    | PS52P1F | 230   |                                                                                                              |                                                                                                                              |                                       |                                                                      |
| GWP1213                    | PS51AV  | 115   |                                                                                                              |                                                                                                                              |                                       |                                                                      |
| GWP1214                    | PS51A1  | 115   |                                                                                                              |                                                                                                                              |                                       |                                                                      |
| GWP1221                    | PS41P1F | 115   |                                                                                                              |                                                                                                                              |                                       |                                                                      |
| GWP1222                    | PS42P1F | 230   |                                                                                                              |                                                                                                                              |                                       |                                                                      |
| GWP1223                    | PS41AV  | 115   |                                                                                                              |                                                                                                                              |                                       |                                                                      |
| GWP1224                    | PS41A1  | 115   |                                                                                                              |                                                                                                                              |                                       |                                                                      |

### PUMP INFORMATION ②

| PUMP MODEL | HP  | VOLTS | MAX. AMPS | MIN. CIRCUIT BREAKER | PHASE | FLOAT SWITCH STYLE   | POWER CORD LENGTH | DISCHARGE CONNECTION | MAXIMUM SOLID SIZE |
|------------|-----|-------|-----------|----------------------|-------|----------------------|-------------------|----------------------|--------------------|
| PS41AV     | 0.4 | 115   | 10        | 20                   | 1     | T-spliced vertical   | 10'               | 2"                   | 2"                 |
| PS41A1     |     |       |           |                      |       | T-spliced wide angle |                   |                      |                    |
| PS41P1F    |     |       |           |                      |       | Piggyback wide angle | 20'               |                      |                    |
| PS42P1F    |     |       |           |                      |       | Piggyback wide angle |                   |                      |                    |
| PS51AV     | 0.5 | 115   | 13        | 20                   |       | T-spliced vertical   | 10'               |                      |                    |
| PS51A1     |     |       |           |                      |       | T-spliced wide angle |                   |                      |                    |
| PS51P1F    |     |       |           |                      |       | Piggyback wide angle | 20'               |                      |                    |
| PS52P1F    |     |       |           |                      |       | Piggyback wide angle |                   |                      |                    |

① Information on individual basin components for "replacement parts" may be found in the Basin Section, kit numbers CWK11, CWK12, CWK21, CWK22 and CWK23.

② Additional pump information may be found on the pump bulletin.

### PS41 PERFORMANCE CHART - See "Performance Chart Note"

| Pipe Length (Feet) | GPM                  |    |    |    |    |    |    |    |    |    |
|--------------------|----------------------|----|----|----|----|----|----|----|----|----|
|                    | Vertical Head (Feet) |    |    |    |    |    |    |    |    |    |
|                    | 2                    | 4  | 6  | 8  | 10 | 12 | 14 | 16 | 18 | 20 |
| 25                 | 96                   | 88 | 82 | 74 | 65 | 54 | 43 | 33 | 24 | 14 |
| 50                 | 83                   | 77 | 70 | 63 | 56 | 47 | 38 | 30 | 22 | 13 |
| 75                 | 74                   | 68 | 62 | 56 | 49 | 42 | 35 | 28 | 21 | 13 |
| 100                | 67                   | 62 | 57 | 51 | 45 | 39 | 33 | 26 | 19 | 12 |
| 150                | 57                   | 53 | 48 | 44 | 39 | 34 | 29 | 23 | 17 | 11 |
| 200                | 51                   | 47 | 43 | 39 | 35 | 31 | 26 | 22 | 16 | 10 |
| 250                | 46                   | 43 | 39 | 36 | 33 | 28 | 24 | 21 | 16 | 10 |
| 300                | 43                   | 39 | 37 | 34 | 30 | 27 | 23 | 19 | 15 | 9  |

### PS51 PERFORMANCE CHART - See "Performance Chart Note"

| Pipe Length (Feet) | GPM                  |    |    |    |    |    |    |    |    |    |
|--------------------|----------------------|----|----|----|----|----|----|----|----|----|
|                    | Vertical Head (Feet) |    |    |    |    |    |    |    |    |    |
|                    | 2                    | 4  | 6  | 8  | 10 | 12 | 14 | 16 | 18 | 20 |
| 25                 | 105                  | 99 | 91 | 84 | 75 | 65 | 55 | 45 | 35 | 25 |
| 50                 | 90                   | 85 | 78 | 71 | 63 | 56 | 48 | 40 | 32 | 24 |
| 75                 | 80                   | 74 | 69 | 62 | 57 | 50 | 44 | 37 | 30 | 22 |
| 100                | 72                   | 67 | 62 | 57 | 52 | 46 | 40 | 34 | 28 | 21 |
| 150                | 61                   | 58 | 54 | 49 | 45 | 40 | 35 | 31 | 25 | 18 |
| 200                | 54                   | 51 | 48 | 44 | 40 | 36 | 32 | 28 | 23 | 17 |
| 250                | 50                   | 47 | 44 | 40 | 37 | 34 | 30 | 26 | 21 | 16 |
| 300                | 46                   | 43 | 40 | 37 | 34 | 31 | 28 | 24 | 20 | 15 |

**NOTE:** Shaded area does not meet 21 GPM. Minimum Scouring Velocity for 2" pipe.

## PACKAGE WITH WW05 PUMP

| PACKAGE<br>ORDER<br>NUMBER | PUMP     | VOLTS | ①                                                                                                            |                                                                                                                           |                                        |                                                                         |  |
|----------------------------|----------|-------|--------------------------------------------------------------------------------------------------------------|---------------------------------------------------------------------------------------------------------------------------|----------------------------------------|-------------------------------------------------------------------------|--|
|                            |          |       | BASIN                                                                                                        | COVER                                                                                                                     | CHECK<br>VALVE                         | DISCHARGE<br>PIPE                                                       |  |
| GWP1131                    | WW0511AC | 115   | Ribbed Polyethylene<br>23" Diameter x 30" High with<br>4" Slip Type Inlet Hub and<br>Pump Torque Stop Insert | 18" Structural<br>Foam Cover<br>with Bolts,<br>Sealing Tape<br>and (2) 2" and<br>(1) 3" Vent<br>and Discharge<br>Grommets | A9-2PH<br>2" Rubber<br>Sleeve Type     | 2"<br>Diameter x<br>30" Long<br>Schedule<br>40 PVC<br>Discharge<br>Pipe |  |
| GWP1132                    | WW0512AF | 230   |                                                                                                              |                                                                                                                           |                                        |                                                                         |  |
| GWP1231                    | WW0511AC | 115   |                                                                                                              |                                                                                                                           | A9-2P 2"<br>Compression<br>Sleeve Type |                                                                         |  |
| GWP1232                    | WW0512AF | 230   |                                                                                                              |                                                                                                                           |                                        |                                                                         |  |

## PUMP INFORMATION ②

| PUMP MODEL | HP  | VOLTS | MAX. AMPS | MIN. CIRCUIT BREAKER | PHASE | FLOAT SWITCH STYLE   | POWER CORD LENGTH | DISCHARGE CONNECTION | MAXIMUM SOLID SIZE |
|------------|-----|-------|-----------|----------------------|-------|----------------------|-------------------|----------------------|--------------------|
| WW0511AC   | 0.5 | 115   | 13        | 20                   | 1     | Piggyback wide angle | 20'               | 2"                   | 2"                 |
| WW0512AF   |     | 230   | 6.5       | 15                   |       |                      |                   |                      |                    |

① Information on individual basin components for "replacement parts" may be found in the Basin Section, kit numbers CWK11, CWK12, CWK21, CWK22 and CWK23.

② Additional pump information may be found on the pump bulletin.

## WW05 PERFORMANCE CHART - See "Performance Chart Note"

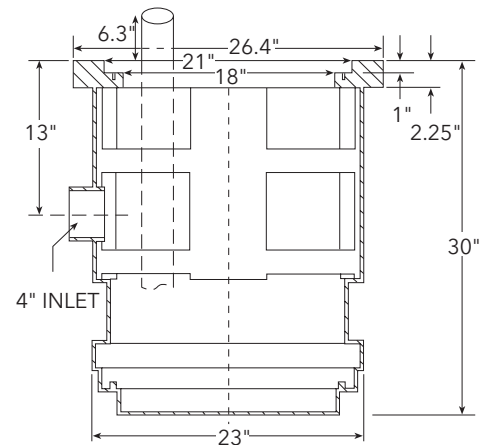
| Pipe Length (Feet) | GPM                  |    |    |    |    |    |    |
|--------------------|----------------------|----|----|----|----|----|----|
|                    | Vertical Head (Feet) |    |    |    |    |    |    |
|                    | 4                    | 6  | 8  | 10 | 12 | 14 | 16 |
| 25                 | 75                   | 68 | 62 | 52 | 40 | 27 | 13 |
| 50                 | 67                   | 61 | 54 | 45 | 35 | 24 | 12 |
| 75                 | 61                   | 55 | 48 | 40 | 32 | 22 | 11 |
| 100                | 56                   | 50 | 44 | 37 | 29 | 21 | 11 |
| 150                | 48                   | 43 | 38 | 32 | 26 | 18 | 10 |
| 200                | 43                   | 39 | 34 | 29 | 23 | 17 | 10 |
| 250                | 39                   | 35 | 31 | 26 | 21 | 15 | 10 |
| 300                | 35                   | 32 | 29 | 24 | 20 | 14 | 10 |

**NOTE:** Shaded area does not meet 21 GPM. Minimum Scouring Velocity for 2" pipe.

## NOMENCLATURE

| CHARACTER | CODE     |                                                |
|-----------|----------|------------------------------------------------|
| 1 - 3     | GWP = GP | Assembled Vortex Wastewater Package            |
| 4 and 5   | 11       | 23" x 30" Ribbed basin with A9-2PH check valve |
|           | 12       | 23" x 30" Ribbed basin with A9-2P check valve  |
| 6 and 7   | 11       | PS51P1F 20' Piggyback wide angle               |
|           | 12       | PS52P1F 20' Piggyback wide angle               |
|           | 13       | PS51AV 10' T- Spliced vertical switch          |
|           | 14       | PS51A1 10' T- Spliced wide angle               |
|           | 21       | PS41P1F 20' Piggyback wide angle               |
|           | 22       | PS42P1F 20' Piggyback wide angle               |
|           | 23       | PS41AV 10' T- Spliced vertical switch          |
|           | 24       | PS41A1 10' T- Spliced wide angle               |
|           | 31       | WW0511AC 20' Piggyback wide angle              |
|           | 32       | WW0512AF 20' Piggyback wide angle              |
|           | 41       | PV51P1F 20' Piggyback wide angle               |
|           | 42       | PV52P1F 20' Piggyback wide angle               |
|           | 43       | PV51AV 10' T- Spliced vertical switch          |
|           | 44       | PV51A1 10' T- Spliced wide angle               |
|           | 45       | PV51P1 10' Piggyback wide angle                |

## Ribbed 23 x 30 Basin Dimensions



For additional basin kit data, see basin bulletins BCPCWK11.

**xylem**  
Let's Solve Water

Xylem, Inc.  
2881 East Bayard Street Ext., Suite A  
Seneca Falls, NY 13148  
Phone: (866) 325-4210  
Fax: (888) 322-5877  
[www.xylem-inc.com/brands/gouldswatertechnology](http://www.xylem-inc.com/brands/gouldswatertechnology)

Goulds is a registered trademark of Goulds Pumps, Inc. and is used under license.

© 2012 Xylem Inc. BGWP23X30 R1 April 2012