

## Portable Compressors

# Mobilair™ M27 Utility



### Versatile

The Mobilair™ M27 Utility rotary screw compressor is designed for cross mounting on service vehicles. It delivers 92 cfm at 100 psig and is ideal for a wide range of applications including sand/shot blasting, demolition, fence post driving, irrigation system maintenance and monument engraving.

### Efficient and Reliable

A heavy-duty 3-cylinder Kubota diesel engine direct coupled to our energy saving Sigma Profile air end produces more air per gallon of fuel. The high capacity

cold start battery ensures reliable operation even under extreme conditions. The M27 Utility's rugged steel cabinet is powder-coated and built to protect the machine from dirt, water, and other contaminants. The engine and compressor have separate inlet filters with maintenance indicators. This protection, combined with a high efficiency cooling system allows the unit to operate in ambient temperatures up to 120°F.

### Convenient

The M27 Utility is very compact. It has both long and short side forklift slots as well as a single-point lifting bail for easy

### Standard Features:

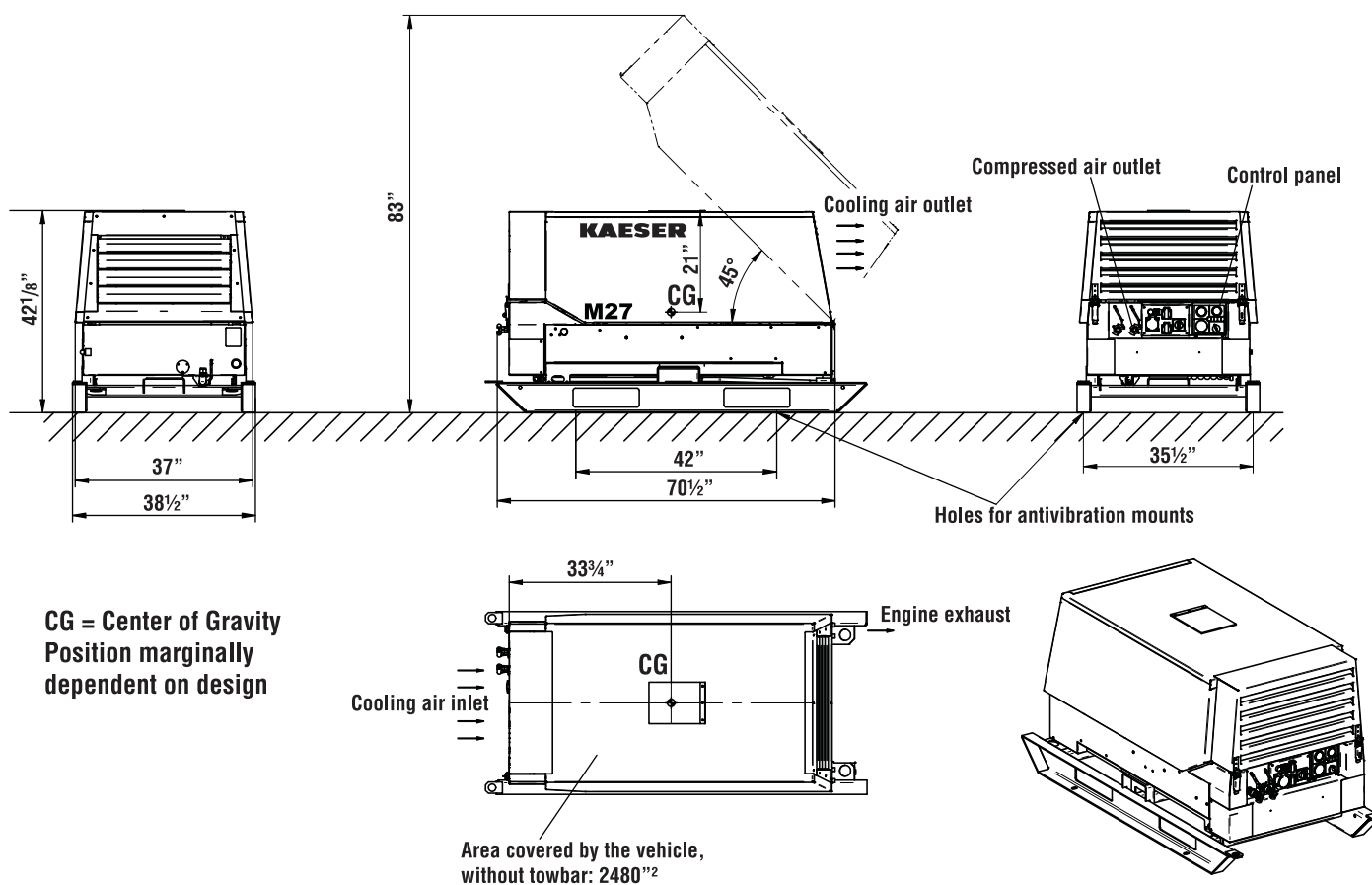
- Sigma profile rotary screw airend produces more air per gallon of fuel
- Meets Tier 4 EPA emissions standards
- Energy efficient direct drive
- Large fuel tank for 8 hours of continuous operation
- Powder coated steel enclosure with sound proofing and vibration isolation
- High capacity cold start battery
- Patented anti-frost control prevents freeze-up
- Highly efficient cooling system

### Options:

- 5 year warranty

mounting/dismounting. The two ¾" hose connections and controls are curbside for safety. The instrument panel features a full range of indicators, including hour meter, air pressure, fuel, and discharge temperature gauges. The canopy provides full access to the tool box and maintenance points. Sound and vibration isolation ensure smooth, quiet running for work crews and neighbors. Another important feature is the large 10.6 gallon fuel tank that provides extended operation - up to 8 full hours!

# Specifications



| Compressor        |          | Diesel Engine          |                | Package            |                    | Dimensions (in.) |        |
|-------------------|----------|------------------------|----------------|--------------------|--------------------|------------------|--------|
| Free air delivery | 92 cfm   | Make                   | Kubota D1105-B | Fuel tank capacity | 10.6 gal.          | Length           | 70 1/2 |
| Working Pressure  | 100 psig | Power at full load     | 21.2 hp        | Weight, dry        | 1267 lb.           | Width            | 38 1/2 |
|                   |          | Full load speed        | 2850 rpm       | Outlets            | 2 x 3/4"           | Height           | 42 1/8 |
|                   |          | Off load running speed | 2100 rpm       | Sound level max    | 76 db(A) at 23 ft. |                  |        |

Specifications are subject to change without notice.

## KAESER COMPRESSORS

**Built for a lifetime.™**

[www.kaeser.com](http://www.kaeser.com)

**Kaeser Compressors, Inc.**  
511 Sigma Drive  
Fredericksburg, VA 22408 USA  
Telephone: 540-898-5500  
Toll Free: 800-777-7873  
info.usa@kaeser.com

**Kaeser Compressors Canada Inc.**  
3760 La Verendrye Street  
Boisbriand, QC J7H 1R5 CANADA  
Telephone: (450) 971-1414  
Toll free: (800) 477-1416  
info.canada@kaeser.com

**Kaeser Compresores de México  
S de RL de CV**  
Calle 2 #123  
Parque Industrial Jurídica  
76100 Querétaro, Qro.  
Telephone: 01 (442) 218 64 48  
sales.mexico@kaeser.com

**Kaeser Compresores de  
Guatemala y Cia. Ltda.**  
Calz. Atanasio Tzul 21-00, zona 12  
El Cortijo II, Bodega 501  
01012-Guatemala City  
Telephone: +502 2412-6000  
info.guatemala@kaeser.com

Certified Management Systems

