

ITT

BCQD

Residential Water

CentriPro

Quick Disconnect Control Boxes
For 4", 1Ø, 3-Wire Submersible Motors



FEATURES

- Voltage Relays for installer convenience
- 115 and 230 volt models
- 208 volt relay available for low voltage applications
- Start Capacitors with resistors
- NEMA 3R enclosure for indoor or outdoor mounting
- Quick disconnect cover design will retrofit with other Q-D control boxes
- Multiple knockouts
- Two grounding lugs

AGENCY LISTINGS



Listed to UL778 Standard by Underwriters Laboratories Inc. File No. E83318



CentriPro is a brand of ITT Corporation.

www.centripro.com

Engineered for life

CentriPro

Quick Disconnect Control Boxes

CENTRIPRO ORDER NUMBERS

Control Box Order Number	HP	KW	Volts	Replaces old #	Replaces FE #	Standard Circuit Breaker	Standard Fuse	Dual Element Time Delay Fuse	Enclosure Dimensions W x D x H (in)	Shipping Wt. (lbs)
CB05411	.5	.37	115	00043	280 104 49	30 A	35 A	20 A	4.8 x 2.9 x 8.4	4
CB05412	.5	.37	230	00044	280 105 49	15 A	20 A	10 A	4.8 x 2.9 x 8.4	4
CB07412	.75	.55	230	00054	280 107 49	20 A	25 A	15 A	4.8 x 2.9 x 8.4	4
CB10412	1	.75	230	00064	280 108 49	25 A	30 A	20 A	4.8 x 2.9 x 8.4	4

"K" REPAIR PARTS FOR QUICK DISCONNECT STYLE CONTROL BOXES*

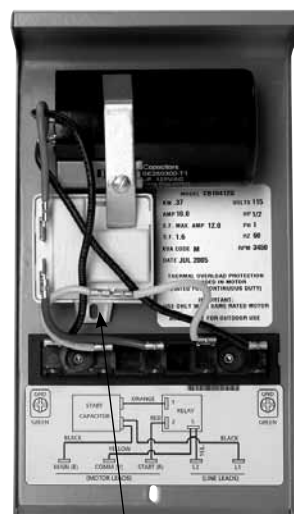
CentriPro Control Box Order Number	HP	Volts	Capacitor Repair Part Order No.	Start Capacitor Mfd.	Capacitor Voltage	Capacitor Quantity	Start Relay Order No.	Supplier Number
CB05411	.5	115	9K450	250-300	125	1	①9K457 ②9K566	RVA7AA6L RVA7AA3L
CB05412	.5	230	9K448	59-71	250	1	①9K462 ②9K567	RVA2AL6L RVA2AL3L
CB07412	.75	230	9K449	86-103	250	1		
CB10412	1	230	9K447	105-126	250	1		

* Repair parts above will work in new voltage relay control boxes as well as in control boxes shown in "Replaces Column" above.

① First Design - Up to June 2009 - Relay tab on bottom, capacitor held by bracket and screw. See pictures below. 208 V use 9K461 relay.

② Current Design - Starting June 2009 - Relay tab on top and Ducati capacitors, all held by one screw. See pictures below. The relays are designed for operation in a specific orientation, therefore there are two different numbers now. 208 V use 9K568 relay.

First Design



Tab Down ①

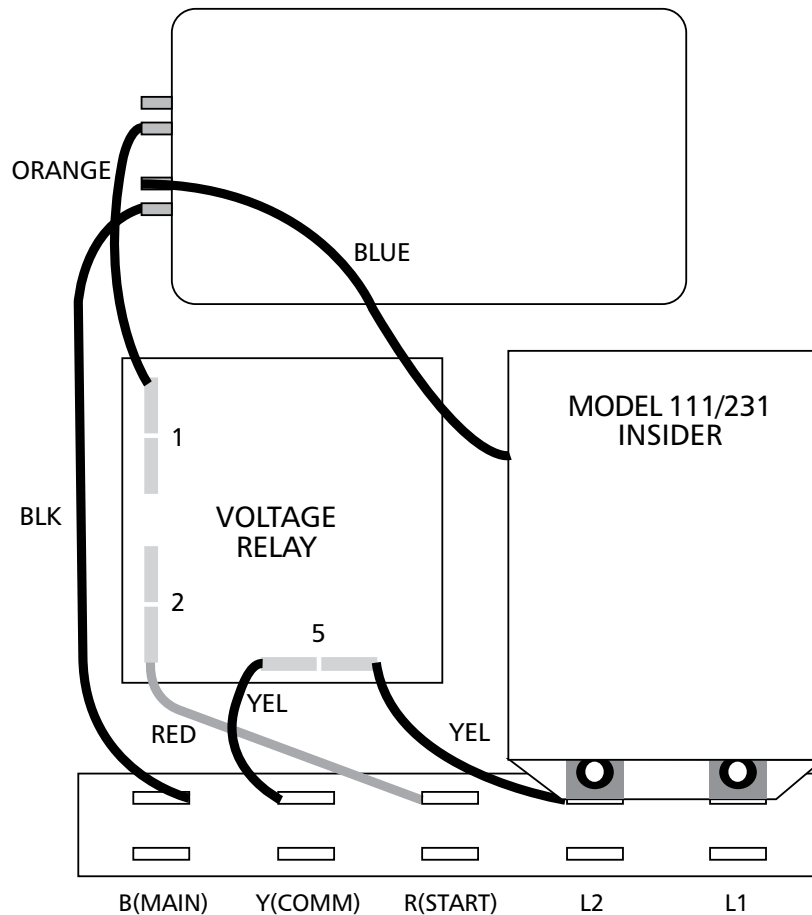
Current Design



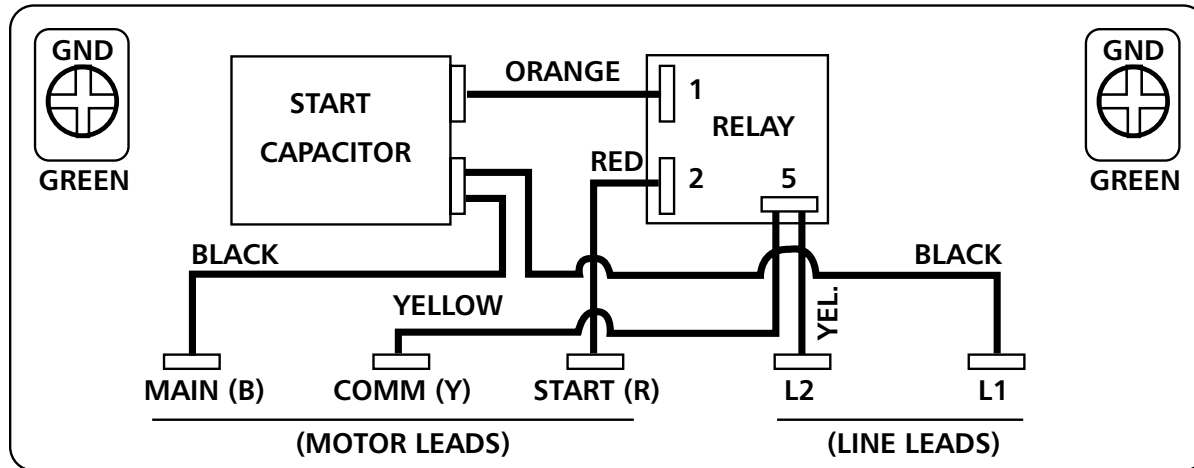
Tab Up ②

INSTALLING A PumpSaver® INSIDER

1. Remove the cover from the front of the 3-wire CentriPro® control box.
2. Remove the yellow wire from the terminal strip at L2.
3. Remove the black wire from L1 to the capacitor.
4. Press the PumpSaver onto the L1 and L2 terminals.
5. Reconnect the yellow wire to L2 on the PumpSaver.
6. Connect the blue wire attached to the PumpSaver to the dual-lug terminal (with the black wire) of the capacitor.



WIRING DIAGRAM



ITT

2881 East Bayard Street, Seneca Falls, NY 13148 • Phone: (315) 568-7123 • Fax: (315) 568-7973
www.centripro.com

CentriPro is a registered trademark of ITT Corporation. ITT, the Engineered Blocks Symbol and Engineered for Life are registered trademarks of ITT Manufacturing Enterprises, Inc.

PumpSaver is a registered trademark of SymCom, Inc.

Copyright © 2009 ITT Corporation BCQD July, 2009
SPECIFICATIONS ARE SUBJECT TO CHANGE WITHOUT NOTICE.

Printed in U.S.A.

